

STATE OF ARKANSAS
REGISTERED
PROFESSIONAL
ENGINEER
No. 14057
NATHAN E. WILSON
1826

HightJackson

ASSOCIATES

5201 W Village Parkway, Suite 300 | Rogers, Arkansas 72768 | (479) 464-4965 | www.hjarch.com

A NEW FACILITY FOR

BWHS - Locker Room Building

1359 Gamble Road, Centerton, AR 72719

DRAWN BY:
AH

CHECK BY:
NEW

ISSUE DATE:
04/06/2026

PROJECT NO.
2421.2

REVISION DATES

SITE UTILITY PLAN

SHEET

U2.1

COPYRIGHT 2026
THESE DRAWINGS AND SPECIFICATIONS ARE
THE EXCLUSIVE PROPERTY OF
HIGHT JACKSON ASSOCIATES P.A.
USE OR REPRODUCTION IS PROHIBITED
WITHOUT WRITTEN CONSENT

HSA

HSAEngineering
479 / 452 / 8922 office
7405 Ellis St.
Fort Smith, AR 72916
HSAConsultants.com

HSA JOB # 25-200

1

2

3

4

5

6

7

8

9

10

11

12

13

14

15

16

17

N

M

L

K

J

H

G

F

E

D

C

B

A

GENERAL PLUMBING NOTES

1.

ALL PLUMBING MATERIALS AND INSTALLATION SHALL COMPLY WITH THE ARKANSAS STATE PLUMBING CODE, LATEST EDITION.

2.

INSTALL ALL DOMESTIC HOT AND COLD WATER PIPING AS PER STATE AND LOCAL CODES.

3.

INSULATE ABOVE GRADE CONCEALED DOMESTIC HOT AND COLD WATER LINES PER SPECIFICATIONS, SECTION 22 07 19.

4.

PROVIDE MAIN DOMESTIC COLD WATER LINE BUILDING SHUT OFF VALVE AT ENTRY INTO THE BUILDING. INSTALL IN FREEZE PROOF VAULT WITH ACCESS COVER.

5.

INSTALL DEEP SEAL TRAPS AT ALL DRAIN CONNECTIONS.

6.

COORDINATE UNDERSLAB PIPING WITH COLUMNS AND FOOTINGS. REFER TO STRUCTURAL DRAWINGS.

7.

MINIMUM DEPTH OF COVER FOR WATER LINES IS 30 IN.

8.

BURY YELLOW #10 THIN COPPER TRACER WIRE IN TRENCH WITH ALL UNDER GROUND PLASTIC SERVICES. LEAVE ENDS EXPOSED FOR FUTURE LOCATION.

9.

PROVIDE AND INSTALL 6 IN. DIRT LEG AND GAS STOP (BALL VALVE ONLY) AT ALL EQUIPMENT GAS CONNECTIONS.

10.

PROVIDE GAS MAIN BUILDING SHUT OFF VALVE NEAR ENTRY TO THE BUILDING.

11.

ALL GAS PIPING SYSTEMS WITHIN A BUILDING AND OTHER ABOVE GROUND GAS PIPING SHALL BE ELECTRICALLY CONTINUOUS AND BONDED TO A GROUNDED ELECTRODE AS DEFINED IN N.F.P.A. TO.

12.

VERIFY LOCATION AND SIZE OF EXISTING SITE UTILITIES WITH UTILITY AUTHORITIES PRIOR TO CONSTRUCTION.

13.

ALL IMPROVEMENTS (PAVEMENTS, CURB AND GUTTER, SOD, ETC.) SHALL BE REPLACED BY GENERAL CONTRACTOR TO PRECONSTRUCTION CONDITION.

14.

WHERE FIRE RATED PARTITIONS OR FLOORS OCCUR, ALL FLOOR TO FLOOR AND ROOM TO ROOM PENETRATIONS SHALL BE PROPERLY FIRE SEALED WITH U.L. LISTED AND CLASSIFIED FIRE CAULK OR FIRE SEALED BY USING AN APPROVED FIRE SEAL SLUG WHICH MEETS U.L. REQUIREMENTS. ALL OTHER PENETRATIONS OF RATED CHASES OR WALLS SHALL BE PROPERLY FIRE SEALED AND WHERE EXTENDING THROUGH SUCH RATED SURFACE SHALL BE A RATED FIRE STOP PENETRATION. ALL FIRE STOPPING, FIRE CAULKING AND FIRE SLEEVING OR OTHER FIRE SEALING SHALL BE ACCEPTABLE BY THE LOCAL AUTHORITIES AND SHALL BEAR THE U.L. SEAL.

15.

INSTALL DOMESTIC WATER AND GAS LINES TIGHT AGAINST BUILDING ROOF STRUCTURE.

16.

VERIFY LOCATION, INVERT AND SIZE OF ALL EXISTING UTILITIES PRIOR TO BEGINNING CONSTRUCTION.

17.

PROVIDE CITY APPROVED REDUCED PRESSURE BACKFLOW PREVENTERS ON ALL DOMESTIC SERVICE LINES CONNECTED TO ALL DEVICES, APPURTENANCES, APPLIANCES AND APPARATUS INTENDED TO SERVE SOME SPECIAL FUNCTION, SUCH AS STERILIZATION, DISTILLATION, PROCESSING, COOLING OR STORAGE OF FOODS OR ICE. WATER PUMPS, FILTERS, SOFTENERS, TANKS AND ALL OTHER APPLIANCES AND DEVICES THAT HANDLE OR TREAT POTABLE WATER SHALL BE PROTECTED AGAINST CONTAMINATION WITH SIMILAR BACKFLOW PREVENTER.

18.

ALL MECHANICAL INSTALLATIONS SHALL CONFORM TO THE LATEST ACCEPTABLE ARKANSAS STATE MECHANICAL CODE.

19.

ALL WATER AND SEWER LINE MATERIALS AND INSTALLATION METHODS SHALL BE IN ACCORDANCE WITH THE CITY OF CENTERTON STANDARD SPECIFICATIONS FOR PUBLIC WORK CONSTRUCTION AS WELL AS THE ARKANSAS STATE PLUMBING CODE.

20.

HORIZONTAL BRANCHES SHALL CONNECT TO HORIZONTAL STACK OFFSETS AND TO THE BASES OF STACKS AT A POINT LOCATED NOT LESS THAN 10 PIPE DIAMETERS DOWNSTREAM FROM THE STACK.

21.

CONTRACTOR SHALL PROVIDE "AS BUILT" DRAWINGS OF ALL PLUMBING AND PIPING SYSTEMS UPON COMPLETION OF THE PROJECT.

22.

THE CONTRACTOR SHALL FAMILIARIZE HIMSELF WITH THE DRAWINGS, THE BUILDING SITE, AND OTHER INFORMATION PRESENTED FOR THE CONSTRUCTION OF THIS PROJECT. IF CONTRACTOR HAS QUESTIONS REGARDING ASSEMBLIES OR LAYOUTS WITH THE PROJECT HE SHALL MAKE THEM KNOWN TO THE ENGINEER IN WRITING PRIOR TO BIDDING THE PROJECT. CLAIMS MADE SUBSEQUENT TO THE BID WILL NOT BE ACCEPTED IF IT IS DETERMINED THAT PROPER FAMILIARIZATION COULD HAVE AVOIDED SUCH CLAIM.

23.

MECHANICAL CONTRACTOR SHALL COORDINATE INSTALLATION PLUMBING SITE UTILITIES WITH SITE WORK OF OTHER TRADES. IN INSTANCES WHERE COORDINATION REQUIRES DEVIATION FROM PLANS MECHANICAL CONTRACTOR SHALL NOTIFY ENGINEER OF PROPOSED CHANGES.

24.

COMPLY WITH STATE OF ARKANSAS ADOPTED ADA ACCESSIBLE GUIDELINES IN REGARD TO ACCESSIBLE FEATURES.

25.

PROVIDE DRIP PAN FOR ENTIRE LENGTH OF PIPE WHERE PIPE MUST BE INSTALLED ABOVE ELECTRICAL EQUIPMENT.

26.

DO NOT ROUTE GROUPS OF CONDUIT, PIPES, AND SLEEVES ABOVE FOOTINGS UNLESS NOTED TO DO SO. IF CONFLICT OCCURS, CONSULT ARCHITECT/ENGINEER.

27.

LIMIT WIDTH OF CONDUIT, PIPES AND SLEEVES NOT TO EXCEED 3 FEET IN WIDTH AS IT PASSES UNDER WALL FOOTING. AS MUCH AS POSSIBLE, ALIGN THE ITEMS PERPENDICULAR TO THE FOOTING AS IT PASSES BELOW FOOTING.

28.

PROVIDE A MINIMUM SPACING OF 2 FEET BETWEEN CONDUIT OR PIPE GROUPS AS ITEMS PASS UNDER FOOTINGS.

29.

DO NOT ROUTE CONDUITS, PIPE OR SLEEVES UNDER COLUMN FOOTINGS OR PAD FOOTINGS.

30.

MECHANICAL CONTRACTOR MUST REVIEW ALL ARCHITECTURAL DRAWINGS FOR EXACT LOCATION OF PLUMBING FIXTURES, ROOF, OVERFLOW AND FLOOR DRAINS. IF PLUMBING FIXTURES OR DRAINS ARE SHOWN ON THE ARCHITECTURAL DRAWINGS THEY MUST BE INCLUDED IN THE CONTRACT EVEN IF NOT SHOWN ON THE MECHANICAL DRAWINGS.

31.

WHERE THE BUILDING SEWER IS INSTALLED WITHIN 10 FEET OF THE WATER SERVICE THE WATER SERVICE PIPE SHALL BE A MINIMUM OF 12 INCHES ABOVE THE TOP OF THE HIGHEST POINT OF THE SEWER. REQUIRED SEPARATION DISTANCE SHALL NOT APPLY WHERE A WATER SERVICE PIPE CROSSES A SEWER PIPE IS SLEEVED 10 FEET HORIZONTALLY FROM THE SEWER PIPE CENTERLINE ON BOTH SIDES OF SUCH PIPE CROSSINGS.

32.

DO NOT SCALE DIRECTLY FROM THE PLUMBING DRAWINGS. REFER TO ARCHITECTURAL DRAWINGS FOR ALL DIMENSIONAL INFORMATION.

33.

ALL PLUMBING SANITARY WASTE AND VENT PIPING INSTALLED IN FIRE RATED WALLS OR FLOOR RETURN AIR SYSTEMS SHALL BE CAST IRON. REFER TO ARCHITECTURAL PLANS FOR LIFE SAFETY INFORMATION.

PLUMBING KEYED NOTES

1

INSTALL AN APPROVED TRAP GUARD PRODUCT THAT CONFORMS TO NSF-14, CSA B602-99 AND CSA B19-94.

2

COORDINATE UNDERSLAB PIPING WITH STRUCTURAL FOOTINGS. REFER TO STRUCTURAL PLANS FOR LOCATIONS AND SIZES OF FOOTINGS.

3

PROVIDE AND INSTALL 6 INCH DIRT LEG AND GAS STOP (BALL VALVE ONLY) AT ALL EQUIPMENT GAS CONNECTIONS. REFER TO DETAIL 1/P3.1.

4

MECHANICAL CONTRACTOR SHALL NOT INSTALL ANY WATER LINES ABOVE ELECTRICAL PANELS. REFER TO ELECTRICAL PLANS FOR PANEL LOCATIONS.

5

IDENTIFY OUTDOOR UNDERGROUND LINES WITH CONTINUOUS STRIP OF PLASTIC UTILITY MARKER. TAPE SHOULD STATE AT REGULAR INTERVALS: "CAUTION (STATE UTILITY) PIPE BELOW". INSTALL TAPE ONE FOOT DIRECTLY ABOVE PIPE BEFORE BACKFILLING TO GRADE.

6

MECHANICAL CONTRACTOR TO PROVIDE REDUCED PRESSURE BACKFLOW PREVENTER (RPZ) AND PRESSURE REDUCING VALVE (IF REQUIRED) AT THE DOMESTIC WATER SERVICE ENTRANCE IN BUILDING. THERE SHALL BE NO WYES OR TEES PRIOR TO THE RPZ. PROVIDE WATTS MODEL LF901 OR APPROVED EQUAL RPZ. REFER TO 1/P3.1 FOR DETAIL.

7

WHERE THE BUILDING WATER SERVICE PIPE CROSSES A SEWER PIPE, PROVIDE SLEEVE 10 FEET HORIZONTALLY FROM THE SEWER PIPE CENTERLINE ON BOTH SIDES OF SUCH PIPE CROSSINGS.

8

RE:10/P3.1 FOR MULTI-USER LAVATORY HOT WATER PIPING DIAGRAM.

PLUMBING LEGEND

—————

SANITARY WASTE PIPING

—————EX SS—————

EXISTING SANITARY WASTE PIPING

VENT PIPING

COLD WATER PIPING

—————EX CW—————

EXISTING COLD WATER PIPING

HOT WATER PIPING

-----HWR-----

HOT WATER RETURN PIPING

—————MPG—————

MEDIUM PRESSURE GAS PIPING (5 PSIG)

—————G—————

LOW PRESSURE GAS PIPING (11 IN. W.C.)

—————EX G—————

EXISTING LOW PRESSURE GAS PIPING

-----CD-----

CONDENSATE DRAIN PIPING

—————RD—————

ROOF DRAIN PIPING

—————X—————

BALL VALVE

—————N—————

CHECK VALVE

—————O—————

GAS REGULATOR EQUAL TO SENSUS MODEL 243, INLET PRESSURE @ 5 PSI, SET OUTLET PRESSURE @ 11 IN. W.C.

—————

GAS BALL VALVE

CONNECTION POINT

WATER HAMMER ARRESTOR (SIZE PER MANUFACTURER'S RECOMMENDED FIXTURE UNIT CAPACITY)

1

REFER TO KEYED NOTES

P-1

PLUMBING FIXTURE NUMBER (REFER TO PLUMBING FIXTURE SCHEDULE)

COTG

CLEAN OUT TO GRADE

FD

FLOOR DRAIN

FS

FLOOR SINK

FPFB

FREEZE PROOF HOSE BIB

HB

HOSE BIB

ADA

ACCESSIBLE

HD

HUB DRAIN

WCO

WALL CLEAN OUT

WH

WATER HEATER

SS

SANITARY SEWER

STATE OF ARKANSAS

REGISTERED PROFESSIONAL ENGINEER

NO. 14057

MATTHEW E. WILSON

1826

Hight Jackson

ASSOCIATES

5201 W Village Parkway, Suite 300 | Rogers, Arkansas 72758 | (479) 464-4965 | www.hjarch.com

A NEW FACILITY FOR

BWHS - Locker Room Building

1359 Gamble Road, Centerton, AR 72719

DRAWN BY:
AH

CHECK BY:
NEW

ISSUE DATE
04/06/2026

PROJECT NO.
2421.2

REVISION DATES

PLUMBING NOTES & LEGEND

S H E E T

P1.1

COPYRIGHT 2026

THESE DRAWINGS AND SPECIFICATIONS ARE THE EXCLUSIVE PROPERTY OF HIGHT JACKSON ASSOCIATES P.A. USE OR REPRODUCTION IS PROHIBITED WITHOUT WRITTEN CONSENT.

HSAEngineering

479 / 452 / 8922 office

7405 Ellis St.

Fort Smith, AR 72916

HSAConsultants.com

NOTES:

RE:P2.1 FOR PLUMBING PLANS, RE:P3.1-P3.2 FOR PLUMBING DETAILS. RE:P5.1 FOR PLUMBING SCHEDULES.

HSA

JOB # 25-200



Hight Jackson
ASSOCIATES

5201 W Village Parkway, Suite 3001 Rogers, Arkansas 72781 (479) 464-4965 | www.hjarch.com

BWHS - Locker Room Building

1359 Gamble Road, Centerton, AR 72719

A NEW FACILITY FOR

DRAWN BY:
AH
CHECK BY:
NEW
ISSUE DATE:
04/06/2026

PROJECT NO.
2421.2
REVISION DATES

PLUMBING PLAN
SHEET
P2.1

COPYRIGHT 2026
THESE DRAWINGS AND SPECIFICATIONS ARE
THE EXCLUSIVE PROPERTY OF
HIGHT JACKSON ASSOCIATES P.A.
USE OR REPRODUCTION IS PROHIBITED
WITHOUT WRITTEN CONSENT



HSAEngineering

479 / 452 / 8922 office

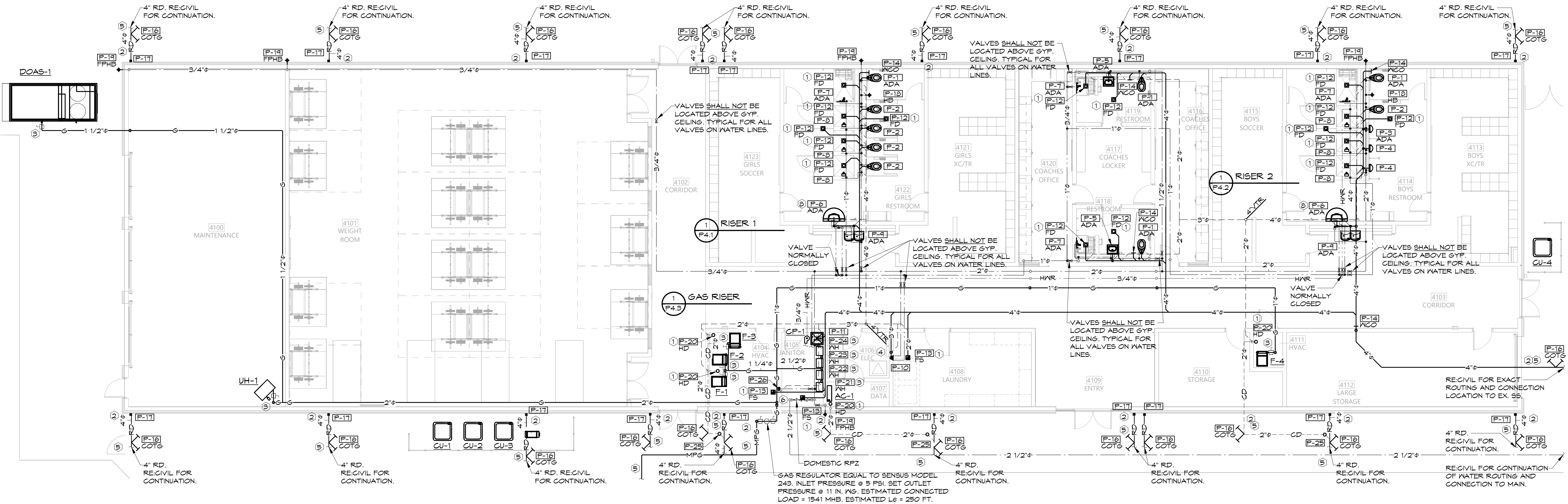
7405 Ellis St.

Fort Smith, AR 72916

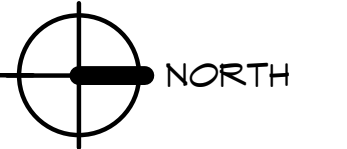
HSAConsultants.com

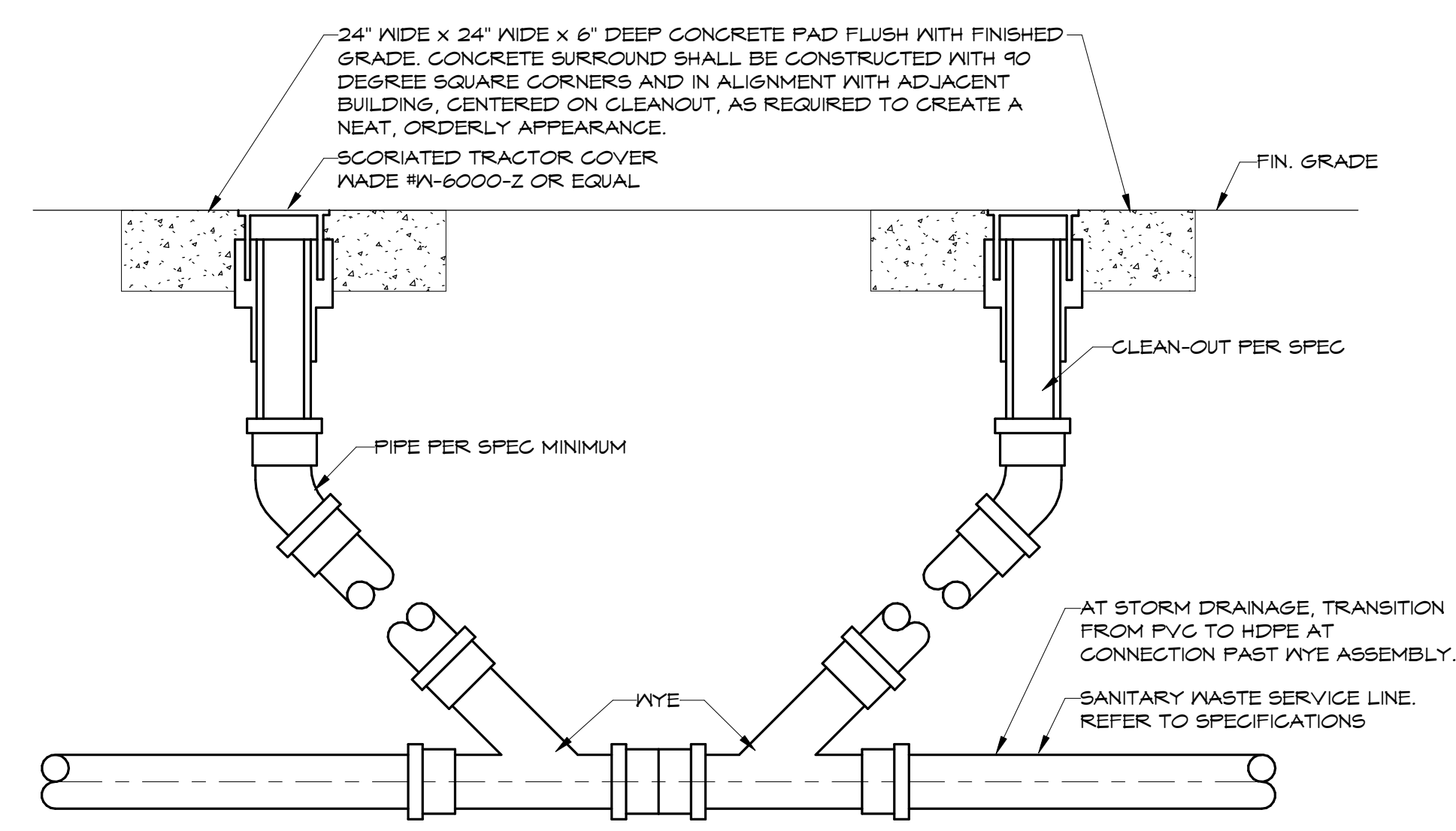
NOTES:
RE:P1.1 FOR PLUMBING LEGEND, GENERAL AND KEYED NOTES.
RE:P3.1-P3.2 FOR PLUMBING DETAILS. RE:P5.1 FOR PLUMBING
SCHEDULES.

HSA JOB #25-200



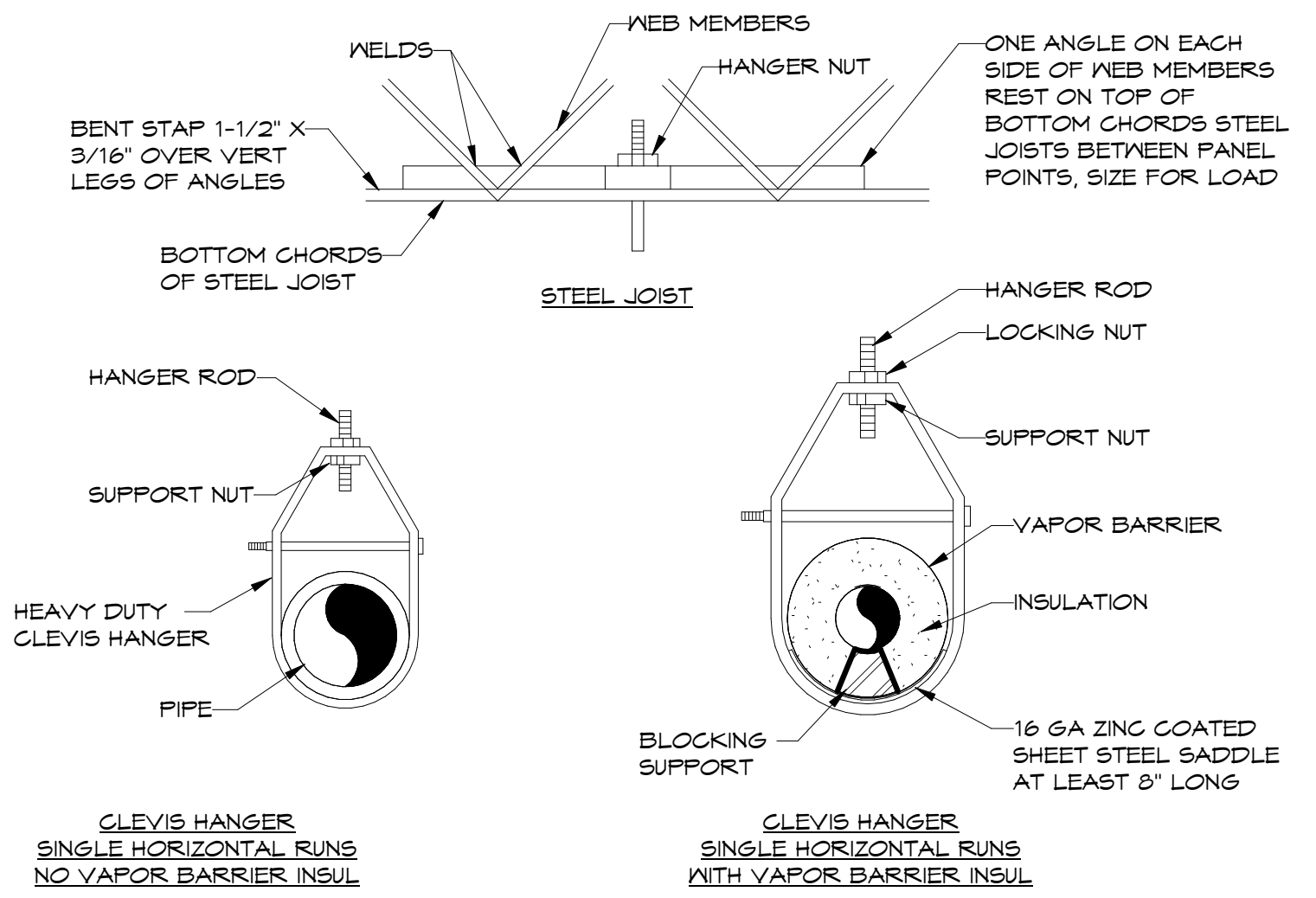
1 PLUMBING PLAN
1/8" = 1'-0"



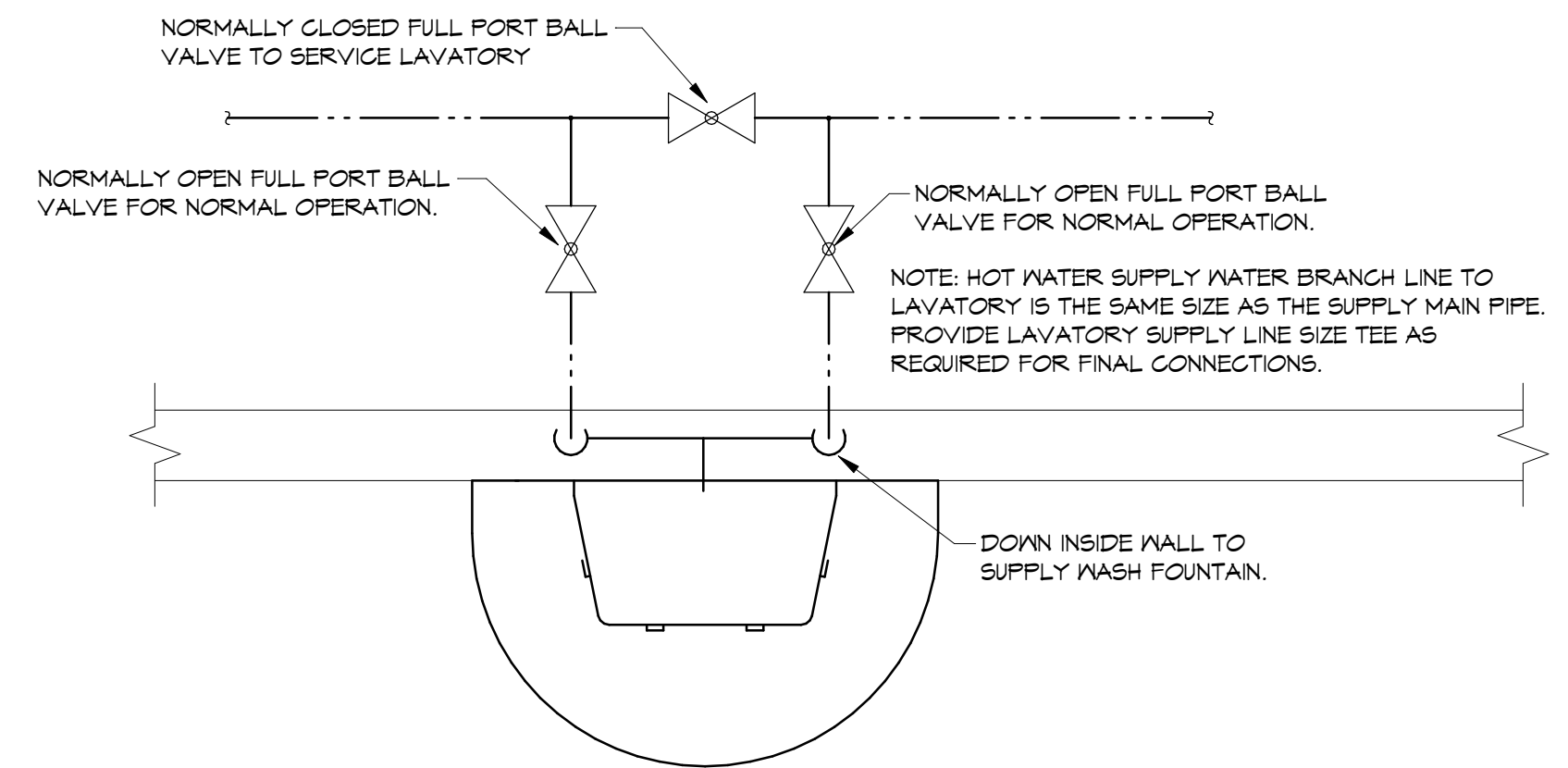


1 DOUBLE CLEAN OUT TO GRADE
NTS

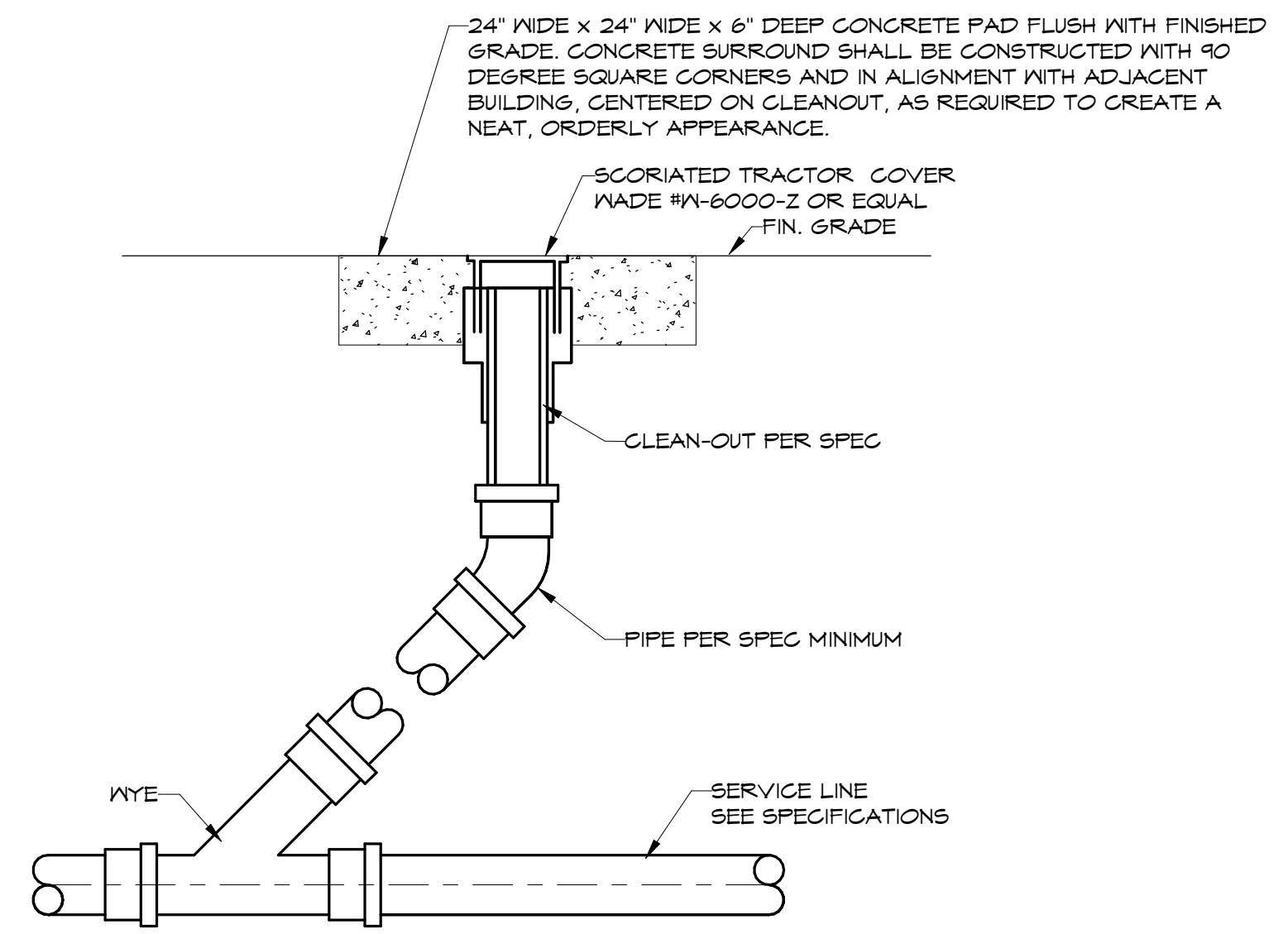
HANGER ROD SCHEDULE			
PIPE SIZE	ROD SIZE	PIPE SIZE	ROD SIZE
UP TO 2"	1/4" DIA	8" THRU 12"	1/2" DIA
2 1/2" UP TO 6"	3/8" DIA		



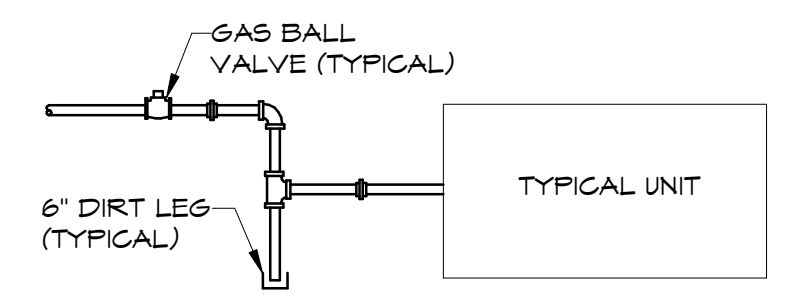
6 TYPICAL PIPE HANGER DETAIL-CLEVIS HANGER
NTS



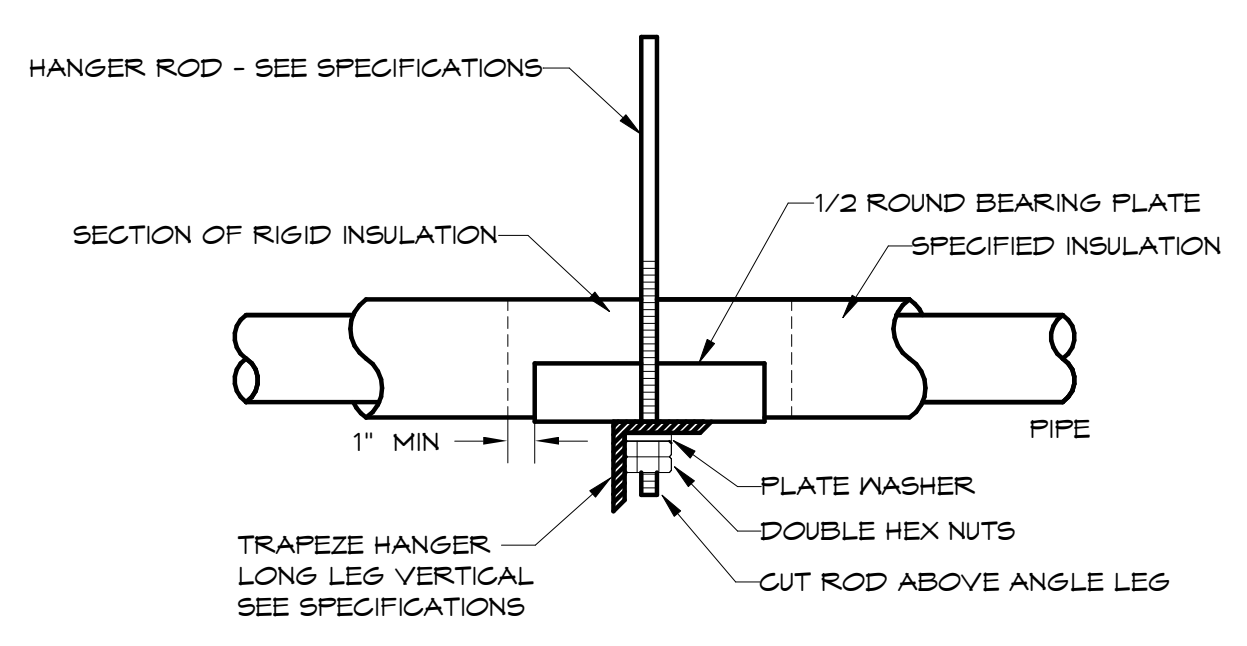
10 MULTI-USER LAVATORY WATER PIPING DETAIL
NTS



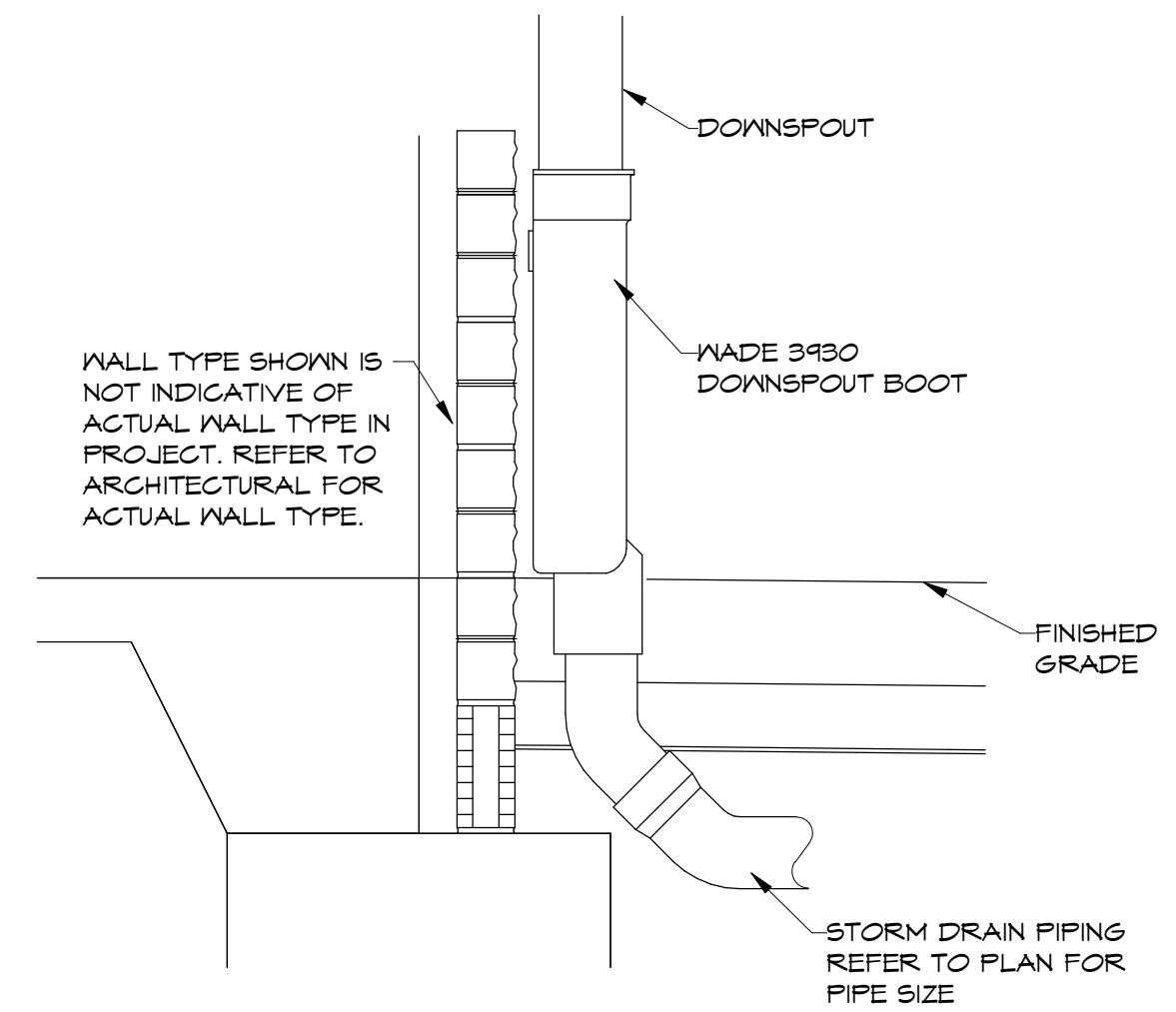
2 CLEAN OUT TO GRADE DETAIL
NTS



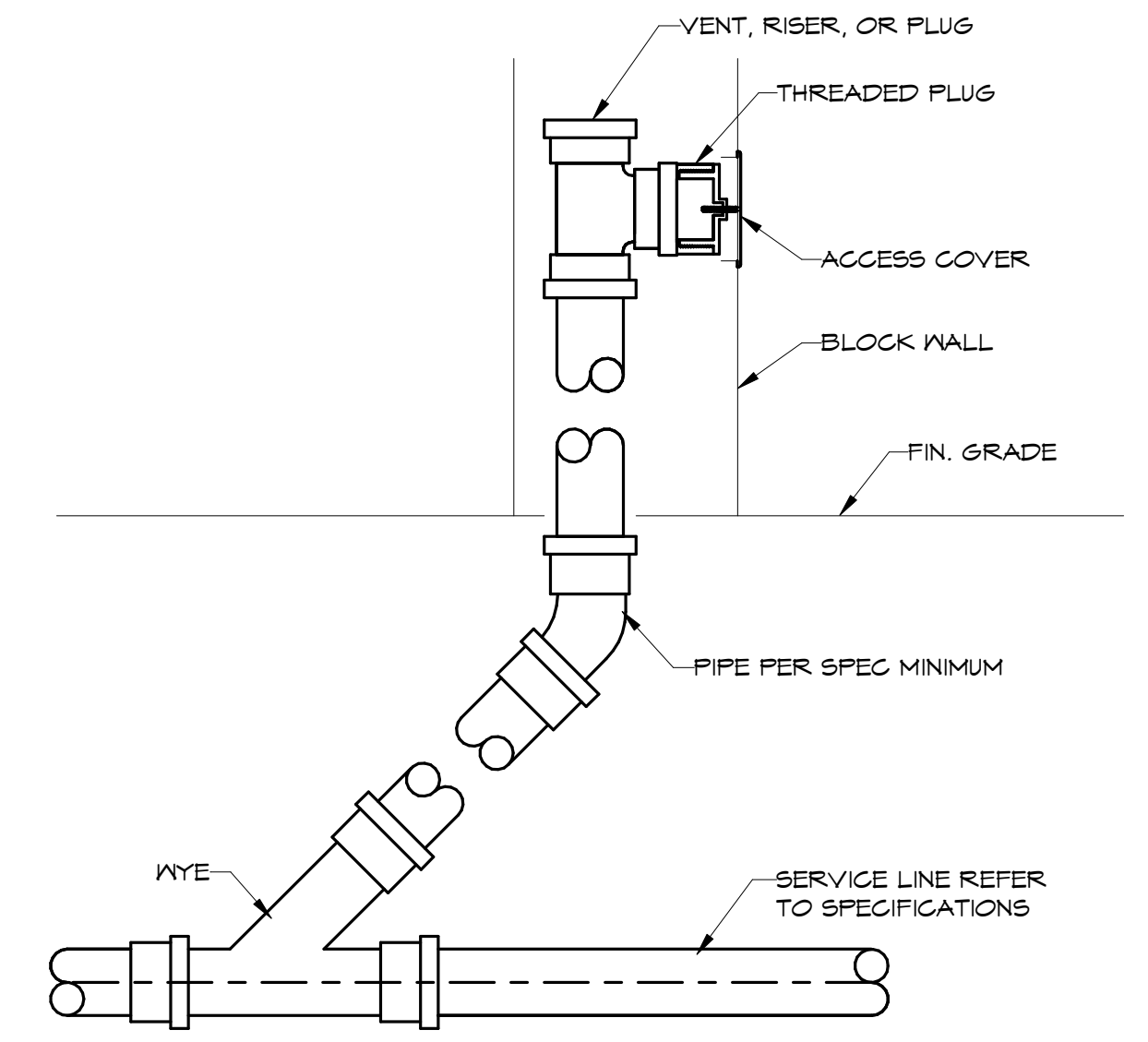
7 TYPICAL GAS CONNECTION
NTS



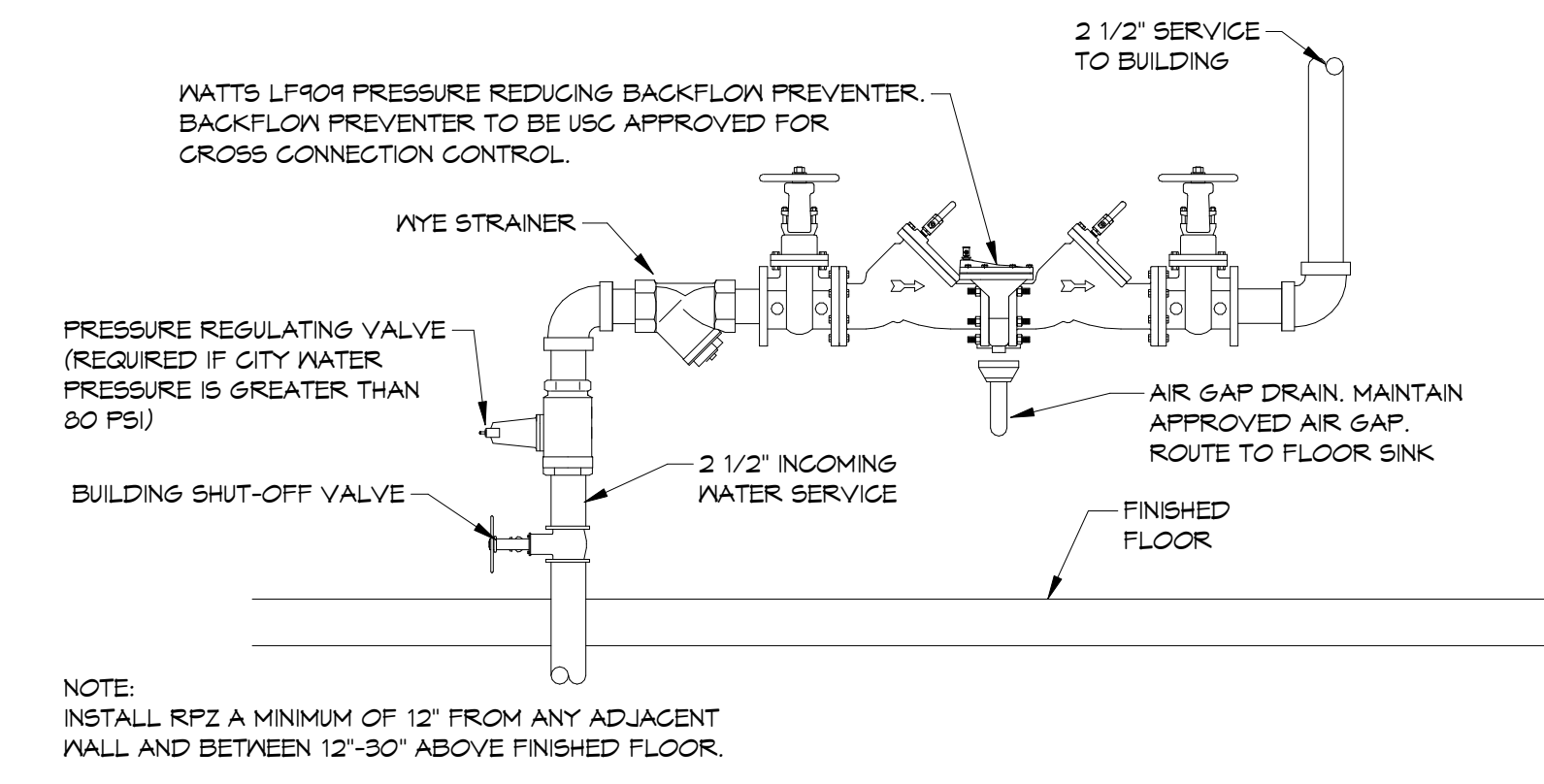
8 TYPICAL PIPE HANGER DETAIL-TRAPEZE
NTS



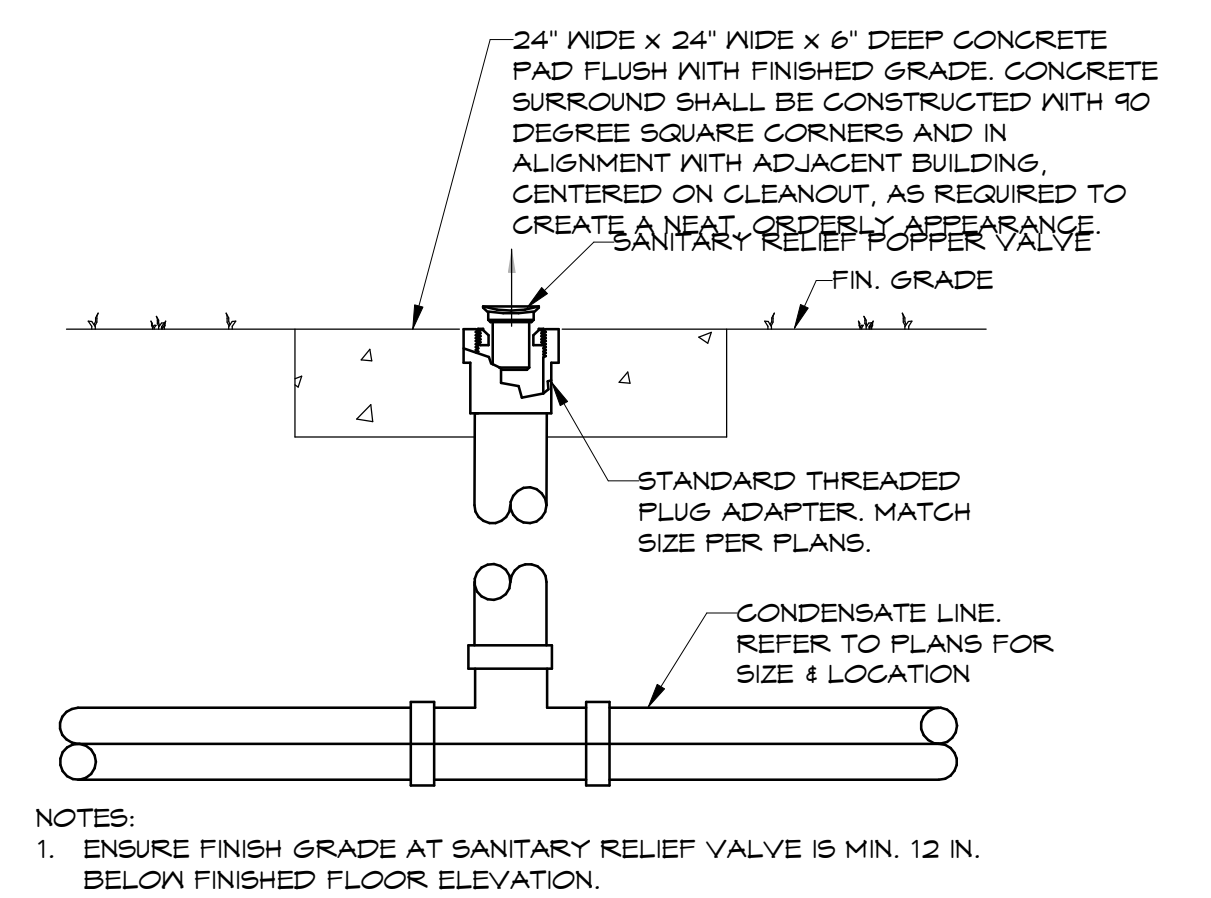
11 CAST IRON DOWNSPOUT BOOT DETAIL
NTS



3 WALL CLEAN OUT DETAIL
NTS

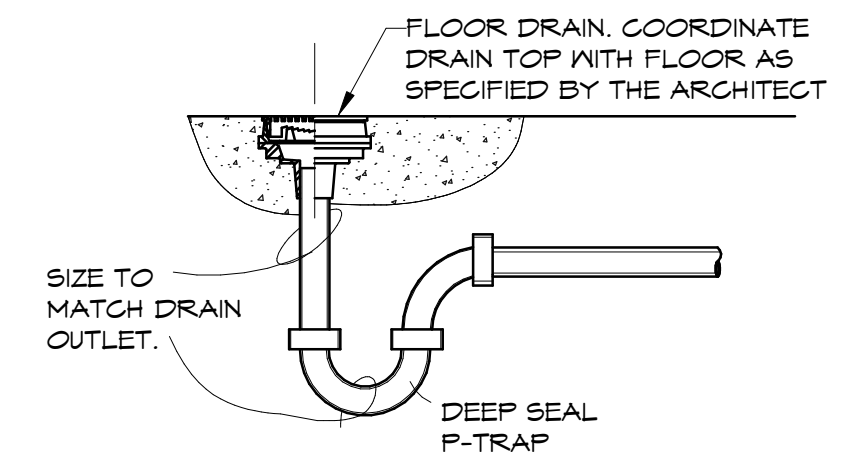


9 DOMESTIC WATER RPZ
NTS

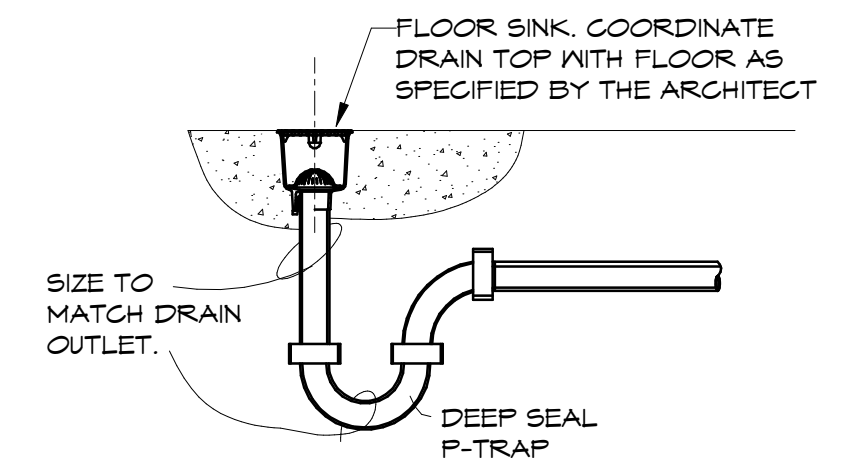


12 SANITARY RELIEF POPPER DETAIL
NTS

4 FLOOR DRAIN DETAIL
NTS



5 FLOOR SINK DETAIL
NTS



NOTES:
RE:P1.1 FOR PLUMBING LEGEND, GENERAL AND KEYED NOTES, RE:P2.1 FOR PLUMBING PLANS, RE:P5.1 FOR PLUMBING SCHEDULES.



HSAEngineering
479 / 452 / 8922 office
7405 Ellis St.
Fort Smith, AR 72916
HSAConsultants.com



Hight Jackson
ASSOCIATES
5201 W Village Parkway, Suite 300i Rogers, Arkansas 72768 | (479) 464-4965 | www.hjarch.com

A NEW FACILITY FOR
BWHS - Locker Room Building
1359 Gamble Road, Centerton, AR 72719

DRAWN BY:
AH
CHECK BY:
NEW
ISSUE DATE
04/06/2026

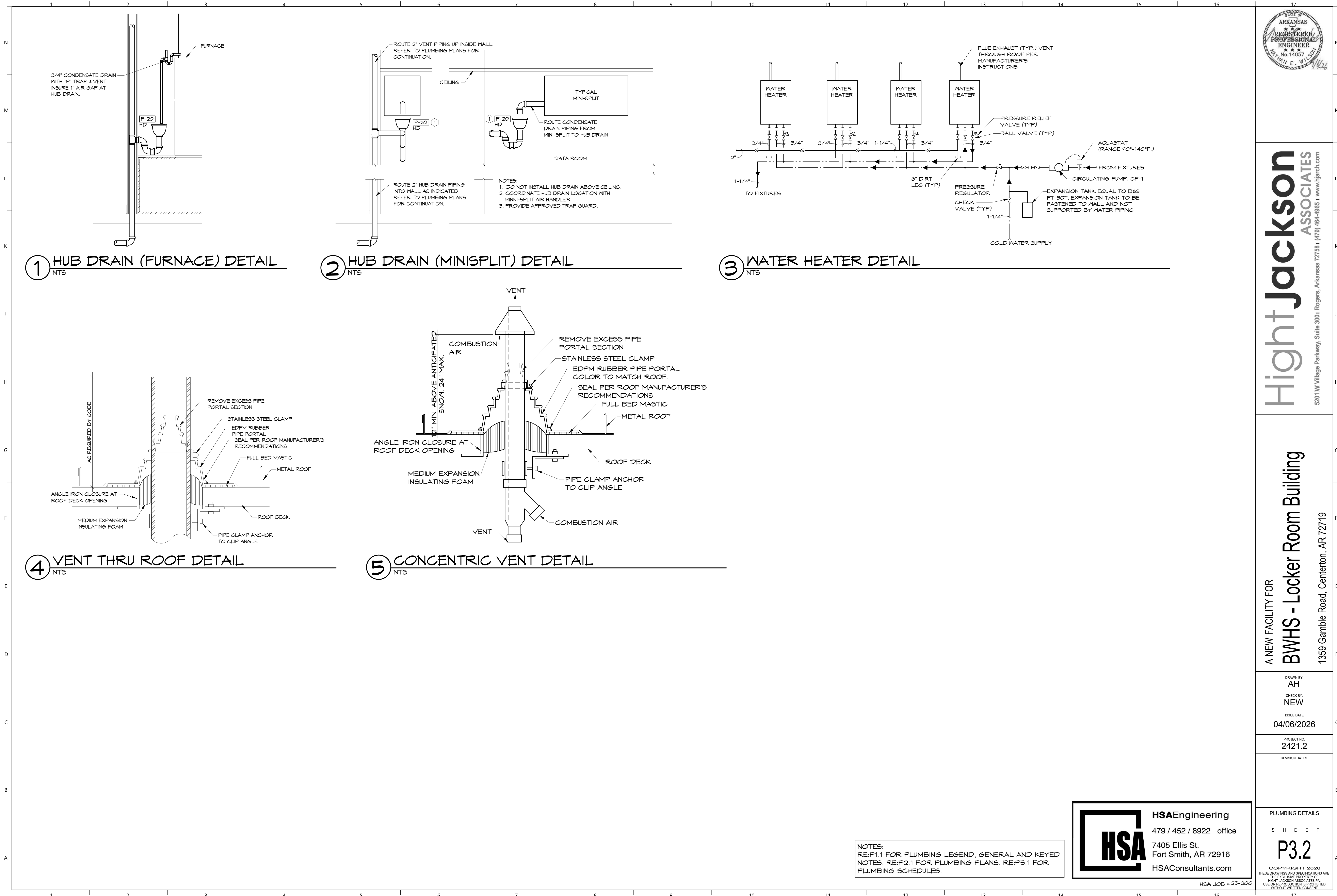
PROJECT NO.
2421.2

REVISION DATES

PLUMBING DETAILS

SHEET
P3.1

COPYRIGHT 2026
THESE DRAWINGS AND SPECIFICATIONS ARE THE EXCLUSIVE PROPERTY OF HIGHT JACKSON ASSOCIATES P.A. USE OR REPRODUCTION IS PROHIBITED WITHOUT WRITTEN CONSENT.



Hight Jackson
ASSOCIATES
5201 W Village Parkway, Suite 300i Rogers, Arkansas 72781 (479) 464-4965 | www.hjarch.com

A NEW FACILITY FOR
BWHS - Locker Room Building
1359 Gamble Road, Centerton, AR 72719

DRAWN BY:
AH
CHECK BY:
NEW
ISSUE DATE:
04/06/2026

PROJECT NO.
2421.2

REVISION DATES

PLUMBING DETAILS
SHEET
P3.2
COPYRIGHT 2026
THESE DRAWINGS AND SPECIFICATIONS ARE
THE EXCLUSIVE PROPERTY OF
HIGHT JACKSON ASSOCIATES P.A.
USE OR REPRODUCTION IS PROHIBITED
WITHOUT WRITTEN CONSENT



HSAEngineering
479 / 452 / 8922 office
7405 Ellis St.
Fort Smith, AR 72916
HSAConsultants.com

NOTES:
RE:P1.1 FOR PLUMBING LEGEND, GENERAL AND KEYED
NOTES. RE:P2.1 FOR PLUMBING PLANS. RE:P5.1 FOR
PLUMBING SCHEDULES.

HSA JOB # 25-200



1 RISER I
N.T.S.

NOTES:
RE:P1.1 FOR PLUMBING NOTES AND LEGEND.
RE:P3.1 THRU P3.2 FOR PLUMBING DETAILS.
RE:P5.1 FOR PLUMBING SCHEDULES.

HSAEngineering
479 / 452 / 8922 office
7405 Ellis St.
Fort Smith, AR 72916
HSAConsultants.com

Hight Jackson
ASSOCIATES
5201 W Village Parkway, Suite 300 | Rogers, Arkansas 72758 | (479) 464-4965 | www.hjarch.com

A NEW FACILITY FOR

BWHS - Locker Room Building

1351 Gamble Road, Centerton, AR 72719

DRAWN BY:
AH

CHECK BY:
NEW

ISSUE DATE:
04/06/2026

PROJECT NO:
2421.2

REVISION DATES

PLUMBING
RISER

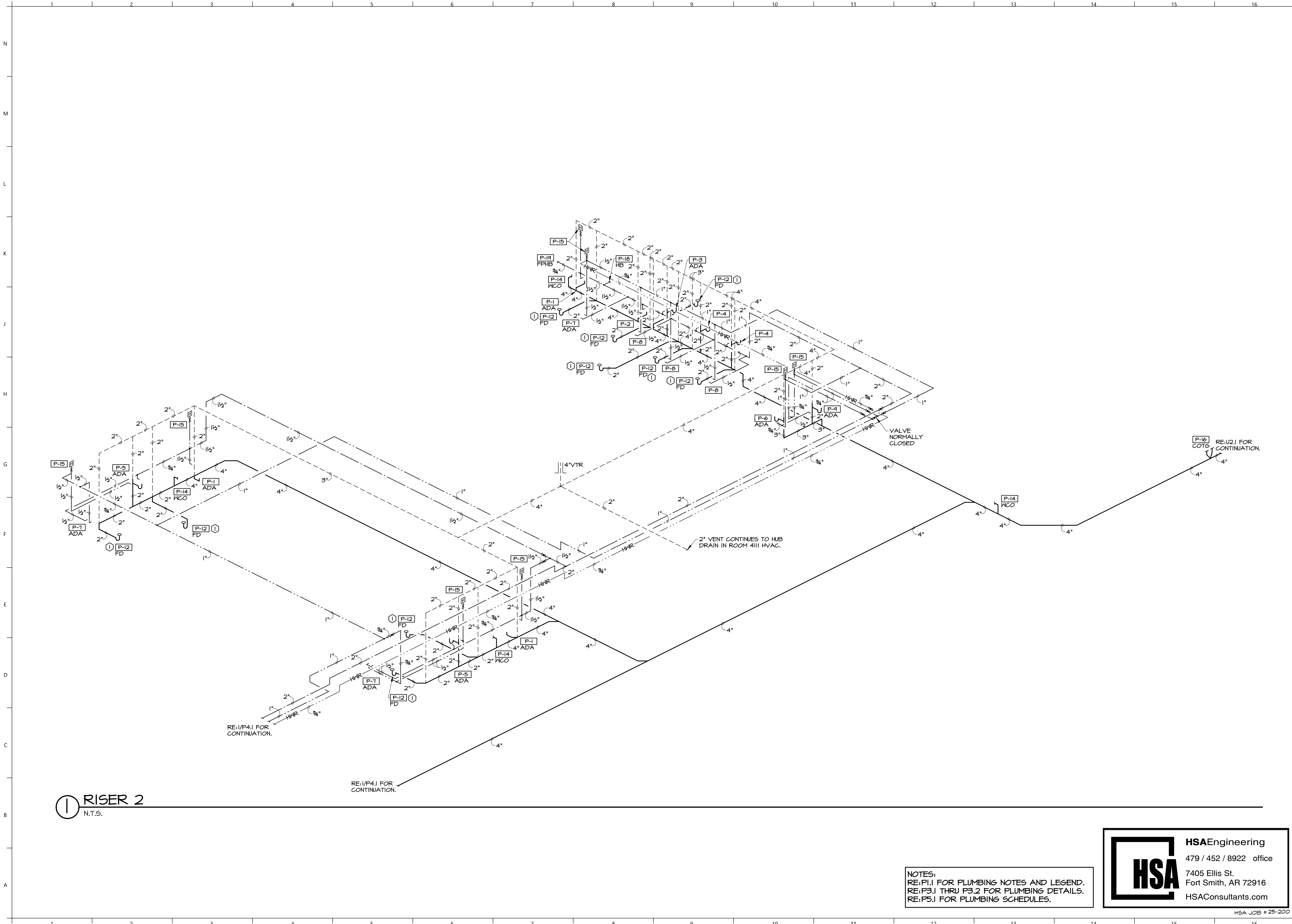
SHEET

P4.1

COPYRIGHT 2026
THESE DRAWINGS AND SPECIFICATIONS ARE
THE EXCLUSIVE PROPERTY OF
HIGHT JACKSON ASSOCIATES, P.A.
USE OR REPRODUCTION IS PROHIBITED
WITHOUT WRITTEN CONSENT

HSA JOB # 25-200

17



1 RISER 2
N.T.S.

NOTES:
RE: P1.1 FOR PLUMBING NOTES AND LEGEND.
RE: P3.1 THRU P3.2 FOR PLUMBING DETAILS.
RE: P5.1 FOR PLUMBING SCHEDULES.

HSAEngineering
479 / 452 / 8922 office
7405 Ellis St.
Fort Smith, AR 72916
HSAConsultants.com

HSA JOB # 25-200

Hight Jackson
ASSOCIATES

5201 W Village Parkway, Suite 300 | Rogers, Arkansas 72758 | (479) 464-4965 | www.hjarch.com

A NEW FACILITY FOR
BWHS - Locker Room Building
1351 Gamble Road, Centerton, AR 72719

DRAWN BY:
AH

CHECK BY:
NEW

ISSUE DATE
04/06/2026

PROJECT NO.
2421.2

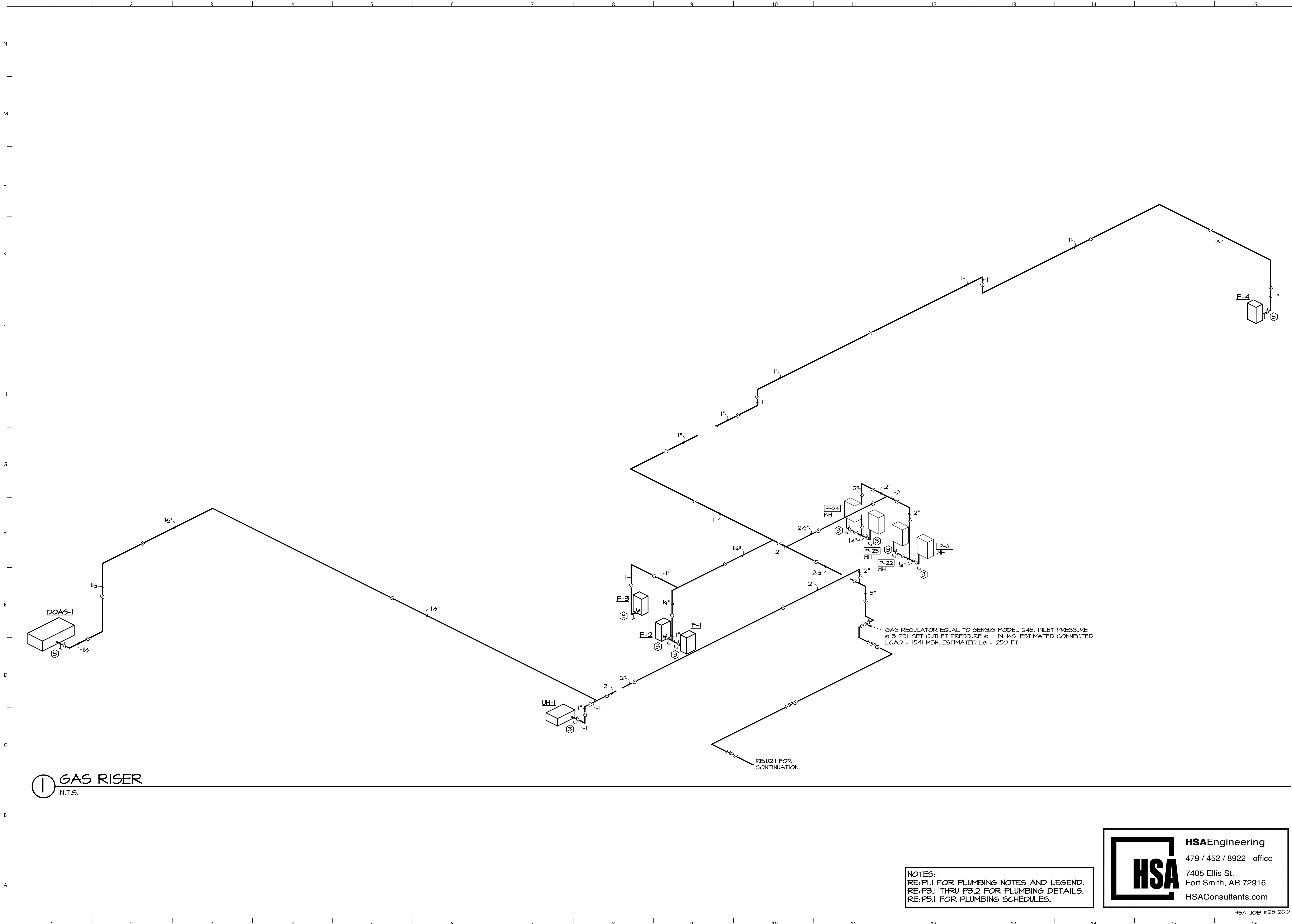
REVISION DATES

PLUMBING
RISER

SHEET

P4.2

COPYRIGHT 2026
THESE DRAWINGS AND SPECIFICATIONS ARE
THE EXCLUSIVE PROPERTY OF
HIGHT JACKSON ASSOCIATES, P.A.
USE OR REPRODUCTION IS PROHIBITED
WITHOUT WRITTEN CONSENT




1 GAS RISER
N.T.S.

NOTES:
RE:P1.1 FOR PLUMBING NOTES AND LEGEND.
RE:P3.1 THRU P3.2 FOR PLUMBING DETAILS.
RE:P5.1 FOR PLUMBING SCHEDULES.



HSAEngineering
479 / 452 / 8922 office
7405 Ellis St.
Fort Smith, AR 72916
HSAConsultants.com

HSA JOB # 25-200



Hight Jackson
ASSOCIATES
5201 W Village Parkway, Suite 3001 Rogers, Arkansas 72758 | (479) 464-4965 | www.hjarch.com

A NEW FACILITY FOR
BWHS - Locker Room Building
1351 Gamble Road, Centerton, AR 72719

DRAWN BY:
AH
CHECK BY:
NEW
ISSUE DATE
04/06/2026

PROJECT NO.
2421.2
REVISION DATES

GAS
RISER
S H E E T
P4.3
COPYRIGHT 2026
THESE DRAWINGS AND SPECIFICATIONS ARE
THE EXCLUSIVE PROPERTY OF
HIGHT JACKSON ASSOCIATES, P.A.
USE OR REPRODUCTION IS PROHIBITED
WITHOUT WRITTEN CONSENT

